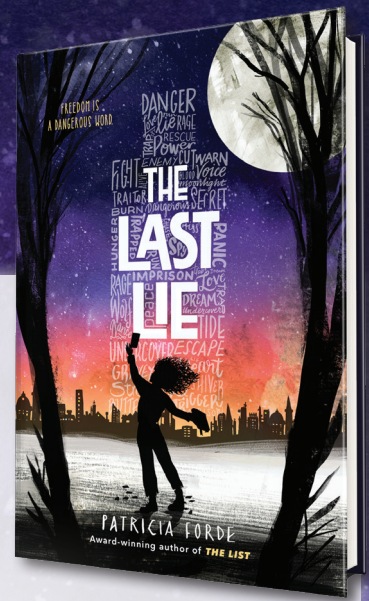




THE LAST LIE

PATRICIA FORDE



DISCUSSION QUESTIONS

1. Art and music are banned in Ark. Are art and music essential in our society?
2. Which comes first, language or thoughts?
3. Letta is charged with designing a syllabus to educate the children of Ark. A syllabus for any school at any time should reflect the concerns of the day. Do you agree?
4. Are leaders born or made?
5. Letta and her young friends are activists. Do you think it is right that young people and sometimes children are the ones leading with these causes? Do they put themselves in danger by doing so? Is that a brave thing to do, or is it foolish? Do you admire young activists? Why or why not?
6. Letta and Marlo are close friends. What makes a good friend?
7. Finn and Rosco have different ideas when it comes to toppling Ark. Does violence ever have a place in creating a better society?
8. Many of the characters in *The Last Lie* display courage. What, in your opinion, is the definition of “courage”?
9. Letta meets Danu and Rua in the forest. They have decided to drink polluted water even though it will shorten their lives. Are there worse things than dying?
10. Werber is an anti-hero in this novel. What are his worst traits?
11. Edgeware is a very likable character in this novel. What are her best traits?
12. What do you notice about Amelia’s character? Which qualities are redeeming, and which are not?
13. How does Amelia compare to John Noa as a leader? Which leader do you think was better than the other? Why?
14. Amelia is almost blind physically. How is she blind psychologically?
15. Based on the way the story concludes, what challenges do you think Letta and the Creators will face in Ark moving forward?

